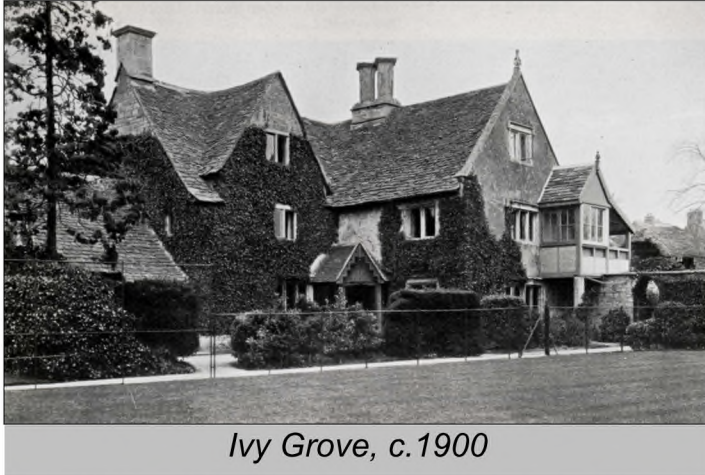


Wycliffe Houses

Ivy Grove



Ivy Grove, c.1900



Ivy Grove, late 19th century

A house called Middlemore's was a medieval freehold of Stonehouse manor, probably timber-framed. It was part of the Robbins family estates which later came to the Selwyns, with a share of considerable lands. The tenants were the Dangerfield family, yeoman farmers but also involved in cloth, with their occasional sub-tenants. They rebuilt the house in stone in the early 17th century.

In the early 18th century it was bought by its neighbour, John Andrews, whose tenants were Daniel Hopton, yeoman, and his sons.

Later in the century Daniel Baker, farmer, and his sons took over. In 1803 Daniel Baker was farming 77 acres, until he died in 1814.

By 1840 the house was in two cottages, occupied by tradesmen. It was in the same ownership as School House until 1881, and was bought by Thomas Sibly for Wycliffe College in 1888. It was expanded into the School Sanatorium in 1933. It remains as Wycliffe's oldest building.



View across the Wycliffe College campus from the top of the Chapel spire.

Ivy Grove in foreground