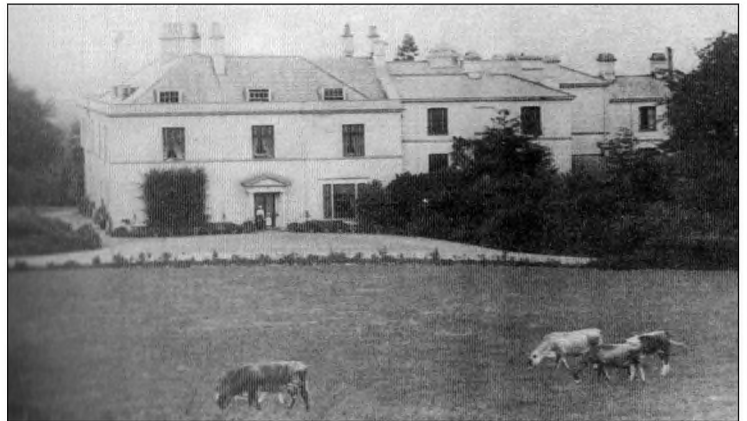


# Standish House

## The King Family 1884 - 1898

Standish House stands on a hill overlooking the Stonehouse valley and is close to Haresfield Beacon.

It is surrounded by farm land and to reach the house you have to go up a long drive, so it is very private.



Lord Sherborne

In 1884 Annie King, widow of Richard Jenkins Poole King, moved from Brislington to Standish House because she felt that Bristol was expanding too near to her home.

Standish was on the edge of the Cotswolds. The house belonged to Edward Lenox Dutton, 4th Baron of Sherborne. The lease was for 21 years at £150 a year. This was a large sum but, having sold her house and with an income from the shipping business, it was a sum Annie was prepared to pay for country life.

The house was large with stabling for her 30 horses. The family were members of the Berkeley Hunt. There were glasshouses and a mushroom house heated by hot water pipes. Ice was collected in winter from the pond, which was fed by a spring, and placed in a underground store so the kitchen staff could serve cold dishes during the summer months.



Annie Poole King, Kate Davenport, Louisa Ambrose:  
the three sisters of Captain Matthew Liddon RN



### **Annie had five children:**

**Mary**, who was the eldest, loved gardening. She designed the gardens and spent much of her time in the garden or horse riding.

**Thomas** loved horse riding, hunting and gambling - spending his money and having a good time. He travelled widely, and helped to run the shipping business - but Annie kept a keen eye on it.

**Alice**, who was known as Dottie, also loved to ride and was keen on fishing and reading.

**Louisa** was not always in good health and led a quiet life - but she did travel with Annie to the Holy Land.

**Sarah** married before the family arrived at Standish House.

In 1898 the family moved to Newark Park at Ozleworth.



Thomas King



Louisa

Alice (Dottie)

Mary