

High Street

With the end of the First World War and the hope for a brighter future, this was a time of growth for the village. As travel increased, its location was ideal for expansion. It became a “hub” for the surrounding area. New small industries replaced the old, defied the Depression and continued to grow. Communications and facilities improved, and the many community activities reflected a strong society.

Stonehouse was resilient as many of the shops kept going through the war and as the men returned home new shops appeared in the village. These shops were independent and individual, and much of the fresh produce sold in them was supplied from local farms and nurseries. The three railway stations made it easy to bring in other goods from further afield, which brought people in from the surrounding area.



Chandler's grocery store



Bradley's Tailoring for men



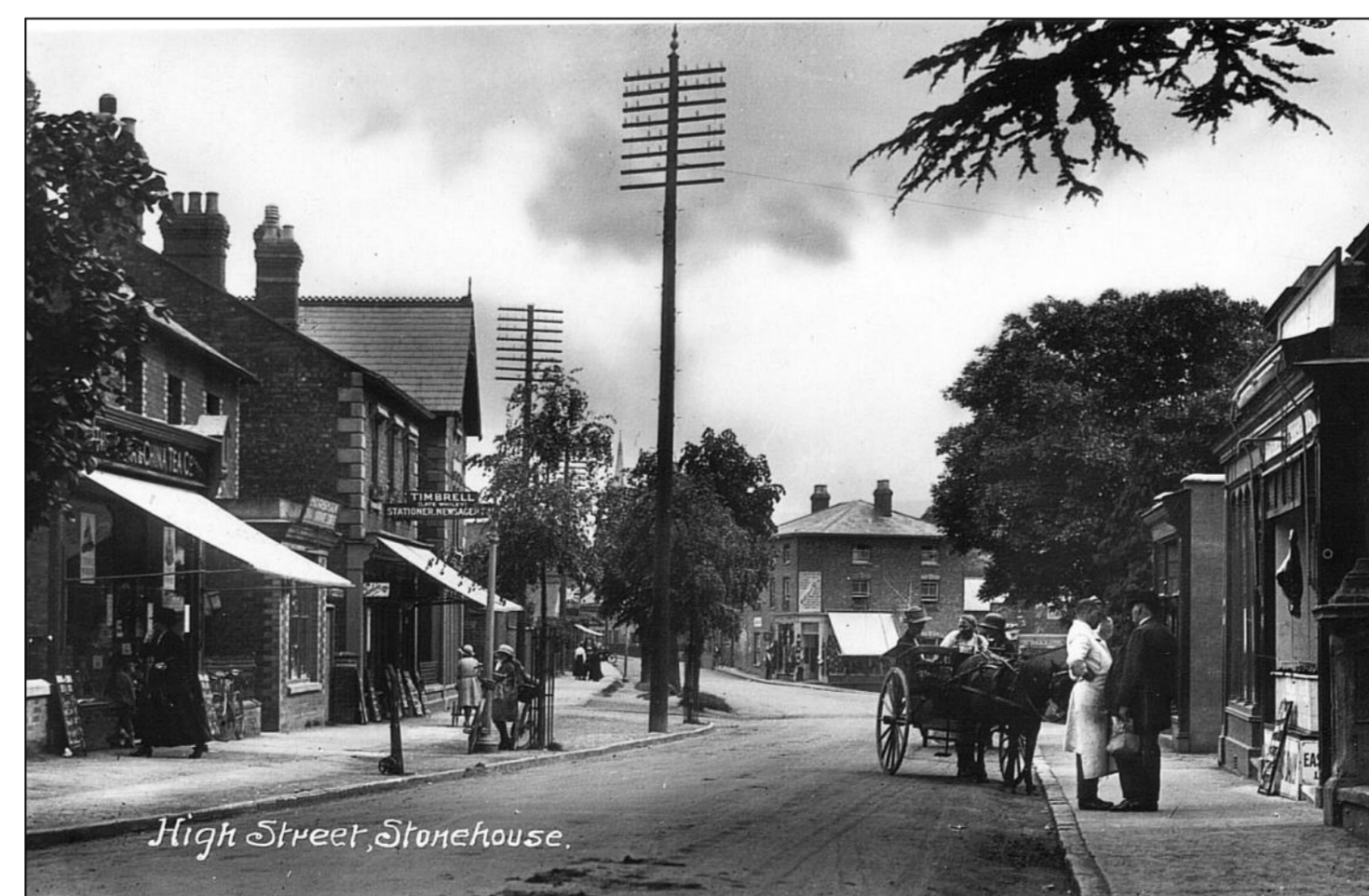
Mullins Haberdashery Store



In 1923 when fire destroyed the Co-op, local workers set up a temporary shop the next day, in the Subscription Rooms, till it was rebuilt. The 1920s building is still in use today.



Timbrell Stationer and Newsagent



The India and China Tea Company, shops



Cake shop, Hillier's bacon curing, Chemist